

Levelling feet

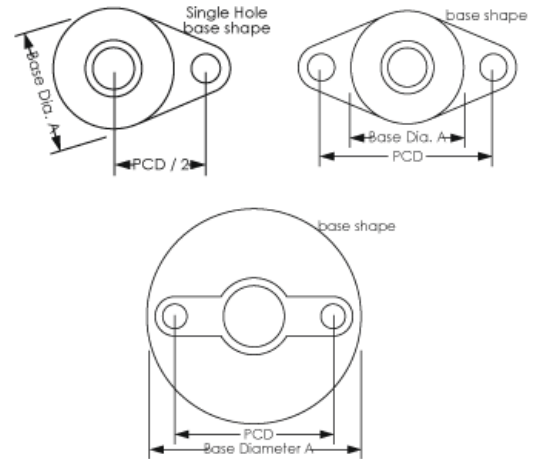
A-JUSTA-FOOT™

When it needs to be level

A-JUSTA-FOOT is a multi-adjustable pedestal foot, ideal for industry, commercial, workshop or food industry applications.

A-Justa-Foot is also available in fixed stem (non-pivoting) in some sizes and longer stem versions can be supplied where more adjustment is required.

- Special rubber insert in the base helps to absorb vibration and means your machinery will stay exactly where you put it.
- For additional security when required, bolt down feet (pads) can be attached to the stem.
- For volume applications, modifications can be made to suit special requirements.
- Threaded inserts for round or square tube are available to fit light wall tube.
- Inserts are designed especially so they can be turned down to fit heavier wall RHS.
- Both stems and insert threads in the standard ranges come in gold passivated zinc or 304 stainless for corrosive applications.
- The inserts and base and ball are manufactured in glass reinforced nylon for strength and durability.
- M16, M20 and many specialized feet available on request



Ball jointed A-Justa-Foot		Size	Base Diam.	Thread Size	Thread Length	Pad Height	Base Height	PCD	Load Rating kgs/lbs		
Part no.											
Mild steel 20	Stainless steel 21		A	B	C	D	E	F			
AF20/40/M8/60	-	40xM8	40	M8	60	20	33	-	350kg 772lbs		
AF20/40/M10/60	AF21/40/M10/60	40xM10	40	M10	60	20	33	-	500kg 1000lbs		
AF20/60/M12/65	AF21/60/M12/65	60xM12	60	M12	65	25	51	-	800kg 1800lbs		
AF20/90/M12/65	AF21/90/M12/65	90xM12	90	M12	65	25	51	-	800kg 1800lbs		
Bolt down A-Justa-Foot		Size	Base Diam.	Thread Size	Thread Length	Pad Height	Base Height	PCD	Load Rating kgs/lbs		
Part no.											
Mild steel 30	Stainless steel 31		A	B	C	D	E	F			
AF30/40/M8/60*	-	40xM8	40	M8	60	20	33	60	350kg 772lbs		
AF30/40/M10/60*	AF31/40/M10/60*	40xM10	40	M10	60	20	33	60	500kg 1000lbs		
AF30/60/M12/65	AF31/60/M12/65	60xM12	60	M12	65	23	51	80	800kg 1800lbs		
AF30/90/M12/65	AF31/90/M12/65	90xM12	90	M12	65	25	51	60	800kg 1800lbs		

*Denotes also available with single hole flange