

## 3

# BINS CRATES DRUMS

Plastic Bins -Stack & Nest ----- 46

Plastic Bins - Stacking ----- 47

Plastic Bins - Nesting ----- 49

Plastic Crate - Stacking & Nesting ----- 50

Plastic Bins - Large Square ----- 52

Plastic Bins - Round ----- 54

Plastic Bins - Rectangular ----- 55

MegaBin & Pallet Bins ----- 55

Plastic Buckets ----- 56

Plastic Drums and Jerry Cans ----- 57



## Bin - Stack & Nest

Clean lines, light weight combined with strength and durability, plus the ability to stack and nest make this series one of the most popular and widely used in Australia.






The bins are used extensively in food processing, meat trades, small-goods manufacture, the fishing industry, poultry processing, materials handling, warehousing and distribution.

They are used for storage and components handling in almost every type of engineering, manufacturing and assembly operation.

- ✓ Stack and nest to save valuable storage space
- ✓ Add your name by hotstamping for clear identification
- ✓ High quality UV resistant, food grade material
- ✓ Australia's No.1 Selling Plastic Bin Range!
- ✓ Label insertion facility available



Action Rack  
Compatible

Code	Type	Vol. litre	Ext. L x W x H mm	Int. L x W x H mm
NA IH060	No.7	32	645 x 413 x 210	597 x 362 x 203
NA IH051	No.10	46	645 x 413 x 276	597 x 362 x 266
NA IH078	No.15	68.2	645 x 413 x 397	597 x 362 x 381
NA IH052WH	Optional White Lid for No.7 - No.10 - No.15 Bins			
NA IH052-BLK	Optional Black Lid for No.7 - No.10 - No.15 Bins			
RE TD L01GFL35	Galvanised dolly - 50mm castor - to suit No.7 - No.10 - No.15 Bins			
RE TD L01GFL14	Galvanised dolly - 75mm castor - to suit No.7 - No.10 - No.15 Bins			
Add to Bin code: BLU  GRY  RE  WH  BLK  (non food grade) eg. No.7 blue bin = NA IH060BLU				

## Bin - Stack & Nest



Code	Type	Vol. litre	Ext. L x W x H mm	Int. L x W x H mm
NA IH044	MOD.25	20	584 x 267 x 178	533 x 229 x 165
Add to bin code: WH ■ RE ■ eg. White bin = NA IH044WH				

## Bin - Stack & Nest - Series 2000

A totally integrated range, the 2000 Series is the result of an extensive research and development program to ensure your materials handling needs will be met well into the future.

Developed with the assistance of leading edge computer design facilities and produced on state-of-the-art injection moulding equipment, these new crates are relatively light in weight, yet strong enough to withstand the rough and tumble of every day handling and transport.



26 Litre Solid



26 Litre Mesh

Code	Type	Vol. litre	Ext. L x W x H mm	Int. L x W x H mm
NA H2260	Solid	26	578 x 384 x 166	502 x 338 x 150
NA H2267	Mesh	26	578 x 384 x 166	502 x 338 x 150
Add to bin code: GRN ■ WH ■ RE ■ (solid only). eg. Green bin = NA H2260GRN				

## Bin - Stack & Nest - Non Food Grade



Code	Type	Vol. litre	Ext. L x W x H mm	Int. L x W x H mm
NA IH060DBLK	Solid	32	645 x 413 x 210	597 x 362 x 203
NA IH051DBLK	Solid	46	645 x 413 x 276	597 x 362 x 266
NA IH078DBLK	Solid	68.2	645 x 413 x 397	597 x 362 x 381
NA IH052-BLK	Optional Black Lid to suit bins above			

## Bin - Stack & Nest - Series 2000

- ✓ Stack up to 10 high
- ✓ Nest when empty
- ✓ Add your name or logo by hotstamping
- ✓ Three lid types
- ✓ Tough, durable, lightweight
- ✓ Solid or mesh/vent options
- ✓ Australian pallet compatible (six bins per layer)
- ✓ Apples, pears, citrus
- ✓ Vegetables
- ✓ Poultry - Meat - Fish
- ✓ Small-goods
- ✓ Seedlings and small plants
- ✓ Clothing products
- ✓ Automotive components
- ✓ Electrical components
- ✓ Warehousing



78 Litre



52 Litre



Code	Type	Vol. litre	Ext. L x W x H mm	Int. L x W x H mm
NA H2520	Solid	52	578 x 384 x 318	502 x 338 x 300
NA H2527	Mesh	52	578 x 384 x 318	502 x 338 x 300
NA H2780	Solid	78	578 x 384 x 470	502 x 338 x 455
Add to Bin code: BLU ■ WH ■ eg. Solid blue 52 litre bin = NA H2520BLU				

## Lid & Dolly Options For Series 2000 Bins



Code	Type
NA IH2000	Drop on lid
NA IH2001	Pilfer proof lid - hinge to one side
NA IH2010	Security lid - hinges to two sides
NA IH2008	Locking Clip for Pilfer proof lid
RE TD L02GFL35	Galvanised dolly - 50mm castor - to suit Series 2000 bins
RE TD L02GFL14	Galvanised dolly - 75mm castor - to suit Series 2000 bins

## Bin - Stack & Nest

A popular range of general purpose crates used extensively in the fishing/seafood industry.

Their features make them an ideal choice for any storage or materials handling application.

### Features

- ✓ Stack and nest
- ✓ Convenient cut-out hand holds
- ✓ Tough & durable UV resistant material
- ✓ Food Grade material
- ✓ Two versatile sizes
- ✓ Can be fitted with label holders or hot-stamped for easy identification.



Code	Type	Vol. litre	Ext. L x W x H mm	Int. L x W x H mm
NA IH066*	Solid	54.5	711 x 438 x 316	673 x 400 x 276
*Add to bin code: WH <input type="checkbox"/> RE <input checked="" type="checkbox"/> (NA IH066 only) eg. White bin = NA IH066WH				
NA IH065	Drain Holes	54.5	711 x 438 x 316	673 x 400 x 276
NA IH068	Solid	118	950 x 460 x 435	915 x 425 x 410
NA IH065 and NA IH068 available in White only				

## Bin - Stack & Nest - Security

Based on the simple principle that out of sight is out of mind, this range of containers with attached lids can be fitted with tamper-deterrent security seals.

By keeping high risk or high value items hidden from view, theft and losses can be reduced whenever they are being stored, handled or transported.

Replace your cartons and secure your goods! Make long term savings on packaging costs.

- ✓ Industrial quality
- ✓ Stacking and nesting
- ✓ Interlocking lid
- ✓ Security holes for locks or ties. Lightweight
- ✓ Made to last through hundreds of journeys



NA IH3011

Code	Type	Vol. litre	Ext. L x W x H mm	Int. L x W x H mm
NA IH3013	Solid Blue	30	575 x 380 x 215	510 x 345 x 185
NA IH3011	Solid Blue	50	575 x 380 x 325	510 x 345 x 295
NA NS393	Solid Blue	75	705 x 470 x 345	625 x 405 x 310

## Bin - Stack & Nest



Code	Type	Vol. litre	Ext. L x W x H mm	Int. L x W x H mm
NA IH090WH	Solid	32	575 x 400 x 215	510 x 355 x 178

## Bin - Stacking - #8



Code	Type	Vol. litre	Ext. L x W x H mm	Int. L x W x H mm
NA IH072	Solid	36	565 x 387 x 203	553 x 355 x 190
NA IH073	Mesh Base	36	565 x 387 x 203	553 x 355 x 190
Add to bin code: WH <input type="checkbox"/> GRY <input checked="" type="checkbox"/> eg. White bin = NA IH072WH				

## Bin - Stacking



NA IH220WH shown with optional lid

Code	Type	Vol. litre	Ext. L x W x H mm	Int. L x W x H mm
NA IH220WH	Solid	42	515 x 345 x 282	475 x 325 x 275
NA IH221WH	Optional White Lid to suit above			

## Bin - Stacking



Code	Type	Vol. litre	Ext. L x W x H mm	Int. L x W x H mm
NA IH099BLU	Solid	29	358 x 358 x 292	331 x 331 x 279

## Bin - Stacking



Code	Type	Vol. litre	Ext. L x W x H mm	Int. L x W x H mm
JS STABIN	Solid	50	750 x 460 x 200	720 x 400 x 190

## Bin - Stacking - Model 90



Code	Type	Vol. litre	Ext. L x W x H mm	Int. L x W x H mm
NA IH047	Mod.90	21	660 x 334 x 121	610 x 305 x 114
Add to bin code: WH <input type="checkbox"/> BLK <input checked="" type="checkbox"/> eg. White bin = NA IH047WH				

## Bin - Stacking - Model 10



Code	Type	Vol. litre	Ext. L x W x H mm	Int. L x W x H mm
NA IH046	Mod.10	46	635 x 400 x 216	597 x 368 x 210
Add to bin code: WH <input type="checkbox"/> eg. White bin = NA IH046WH				

## Bin - Stacking - Multi Stacker

The Multi Stacker range offers a cost effective solution for handling and storing a wide range of materials.

Lightweight, yet durable enough for tough manufacturing, engineering and food handling applications.



NA IH305



NA IH306



NA IH307



NA IH308

Code	Type	Vol. litre	Ext. L x W x H mm	Int. L x W x H mm
NA IH305	Small	13	432 x 324 x 127	387 x 286 x 120
NA IH306	Medium	22	432 x 324 x 203	387 x 286 x 197
NA IH307	Large	32	432 x 324 x 305	387 x 286 x 298
NA IH308	Optional White Lid to suit above			
Add to bin code: BLU <input checked="" type="checkbox"/> WH <input type="checkbox"/> eg. White bin = NA IH305WH				

## Bin - Stacking - Side Access

With easy access from the side, these large capacity industrial quality bins are easily rearranged or relocated and are a great idea for storage and display of a variety of goods.

- ✓ Industrial Quality
- ✓ Easily Rearranged or Relocated
- ✓ Large Capacity
- ✓ Mesh Base
- ✓ Light Grey
- ✓ 580 x 385 x 320mm High



Code	Type	Vol. litre	Ext. L x W x H mm	Int. L x W x H mm
NA IH027	Mesh base	-	580 x 385 x 320	518 x 335 x 295



**Bin - Stacking - Industrial & Automotive**

Designed originally to meet the needs of the automotive industry these particularly strong and rugged containers are used for handling components in a wide range of heavy manufacturing and assembly line situations.

Reinforcing columns allow these crates to be stacked when full. The base is also strengthened to withstand the punishment so often meted out by conveying systems, and a special design feature prevents both buckling and climbing over when crates back up on a line. Smooth inbuilt hand grips make for easier lifting.

Made from tough, durable polypropylene these bins are UV resistant and will give a long service life in tough industrial environments.



IH017



IH026



IH024

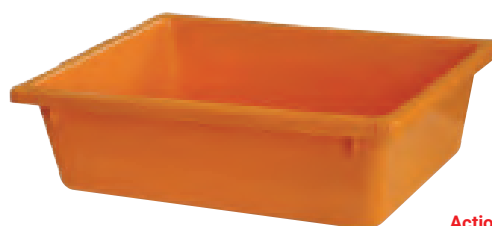


IH025

Code	Type	Vol. litre	Ext. L x W x H mm	Int. L x W x H mm
NA IH125	Mesh Base	12.5	385 x 290 x 165	330 x 235 x 148
NA IH017	Holes Base	20	400 x 280 x 245	360 x 245 x 240
NA IH024GRY	Solid Base	25	580 x 385 x 166	518 x 335 x 140
NA IH025	Mesh Base	25	580 x 385 x 166	518 x 335 x 140
NA IH026	Mesh Base	50	580 x 385 x 320	518 x 335 x 295

**Bin - Nesting**

Code	Type	Vol. litre	Ext. L x W x H mm	Int. L x W x H mm
NA IH077	Solid	11	514 x 213 x 130	483 x 178 x 127

**Bin - Nesting #4**

Action Rack  
Compatible

Code	Type	Vol. litre	Ext. L x W x H mm	Int. L x W x H mm
NA IH089	#4	13.5	430 x 323 x 127	394 x 285 x 108
NA IH014	Optional White Lid to suit above			
Add to bin code: BLU <input type="checkbox"/> WH <input type="checkbox"/> OR <input type="checkbox"/> eg. White bin = NA IH089WH				

**Bin - Nesting #5**

Shown with optional lid

Code	Type	Vol. litre	Ext. L x W x H mm	Int. L x W x H mm
NA IH059	#5	22.7	527 x 375 x 140	489 x 343 x 127
NA IH015	Optional White Lid to suit above			
Add to Bin code: OR <input type="checkbox"/> WH <input type="checkbox"/> eg. White bin = NA IH059WH				

**Bin - Nesting - "Handee"**

Code	Type	Vol. litre	Ext. L x W x H mm	Int. L x W x H mm
NA IH310CLR	Solid	10	385 x 300 x 130	355 x 270 x 125
NA IH315CLR	Solid	15	385 x 300 x 190	355 x 270 x 185
NA IH312	Optional Clear Lid to suit above			

Bin - Nesting - Model 30

Popular uses include parts storage, food production & small goods, meat & poultry storage, handling & presentation.  
Model 30, Model 30D and #4 bins are Action Rack compatible.



Code	Type	Vol. litre	Ext. L x W x H mm	Int. L x W x H mm
NA IH042	Model 30D	27	457 x 318 x 260	419 x 279 x 255
NA IH048	Model 30	16	457 x 318 x 165	419 x 279 x 152
NA IH158	Optional White Lid to suit above			
Add to bin code: BLU <input checked="" type="checkbox"/> RE <input checked="" type="checkbox"/> WH <input type="checkbox"/> eg. White 27 litre bin = NA IH042WH				



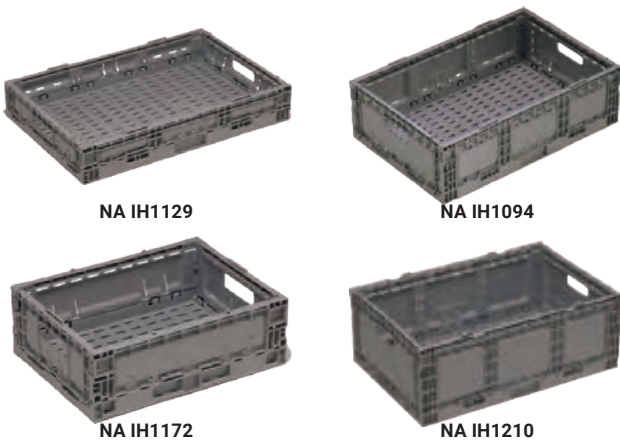
**ACTION-RACK is a unique racking system, exclusive to Reflex Equip, that features a sturdy galvanised steel frame which takes a range of lift out plastic bins. A versatile approach to accessible storage and display, suiting many applications. Optional castors can be fitted for greater manoeuvrability.**

Crate - Stacking - Foldable

At the leading edge of Returnable Transit Packaging (RTP), the Viscount Plastics Foldable Crate range offers manufacturing and primary industries the very real opportunity to achieve major freight and warehousing cost savings as well as introduce 'one touch' handling to their supply chains.  
By folding to a fraction of their assembled height, Viscount Plastics Foldable Crates achieve significant savings in transport fuel usage and carbon emissions by stacking more to the square metre than standard plastic and wooden crates.



Folded flat, the Viscount Folding Crate also maximises available warehouse capacity. This alone can represent major cost savings compared with the alternative of increasing storage capacity by building or leasing additional warehousing and racking. Furthermore, research suggests an RTP folding plastic crate will pay for itself after just 12 round trips and is estimated to have service life of more than 92 round trips.  
Moulded from food grade plastic, each crate assembles and locks together to protect and preserve the quality of its contents. At the end of their long service lives, folding crates are 100 percent recyclable.



Code	Type	Vol. litre	Ext. L x W x H mm	Int. L x W x H mm
NA IH1129	Vent	12	385 x 289 x 129	360 x 261 x 122
NA IH1094	Vent	17	578 x 385 x 94	553 x 357 x 87
NA IH1172	Vent	33	578 x 385 x 172	553 x 357 x 165
NA IH1210	Vent	41	578 x 385 x 210	553 x 357 x 203

Crate - Stacking



Code	Type	Vol. litre	Ext. L x W x H mm	Int. L x W x H mm
NA IH300	Vented	66	610 x 419 x 312	571 x 381 x 305
Add to Bin code: BLU OR eg. Blue bin = NA IH300BLU				

Full details page 92

## Crate - Nesting - Prawn



Code	Type	Vol. litre	Ext. L x W x H mm	Int. L x W x H mm
NA IH001	Mesh	15.5	600 x 352 x 96	565 x 302 x 89
NA IH002	Lid for above			

## Crate - Stacking - Seedling



Code	Type	Vol. litre	Ext. L x W x H mm	Int. L x W x H mm
NA IH012	Mesh/Solid	11	357 x 357 x 112	328 x 328 x 105

## Crate - Stacking - Bread



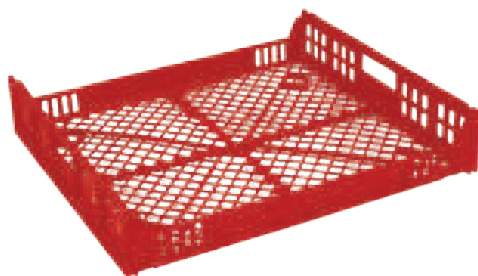
Code	Type	Vol. litre	Ext. L x W x H mm	Int. L x W x H mm
NA IH323	SLBT	48	694 x 604 x 152	662 x 578 x 125

## Crate - Stacking



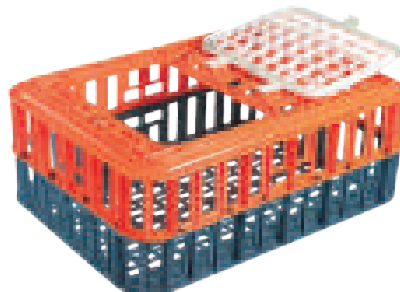
Code	Type	Vol. litre	Ext. L x W x H mm	Int. L x W x H mm
NA IH004	Vented	84	585 x 522 x 350	560 x 495 x 320

## Crate - Stacking



Code	Type	Vol. litre	Ext. L x W x H mm	Int. L x W x H mm
NY PP001RE	Mesh/Vented	34	660 x 580 x 124	624 x 548 x 100

## Crate - Chicken



Code	Type	Vol. litre	Ext. L x W x H mm	Int. L x W x H mm
NA IH954	Mesh	-	735 x 535 x 305	690 x 485 x 260

## Crate - Stacking



Code	Type	Vol. litre	Ext. L x W x H mm	Int. L x W x H mm
NA IH006	Mesh/Vent	29	712 x 448 x 95	680 x 416 x 76
NA IH007	Solid	29	712 x 448 x 95	680 x 416 x 76

## Crate - Stacking - Freezer



Code	Type	Vol. litre	Ext. L x W x H mm	Int. L x W x H mm
NA IH984	Vent	44	730 x 530 x 152	690 x 485 x 135



## Crate - Stacking - Yellow



Code	Type	Vol. litre	Ext. L x W x H mm	Int. L x W x H mm
NA IH098	Vented	50	572 x 382 x 318	540 x 350 x 295

## Crate - Stacking - Orange



Code	Type	Vol. litre	Ext. L x W x H mm	Int. L x W x H mm
NA IH037	Vented	44	538 x 362 x 322	500 x 330 x 300

## Milk Crate - Stacking



Code	Type	Vol. litre	Ext. L x W x H mm	Int. L x W x H mm
NA IH160	Mesh	-	362 x 362 x 323	305 x 305 x 310

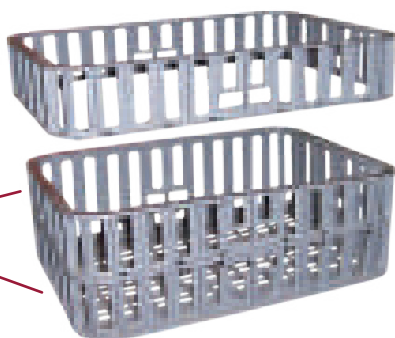
## Crate - Stacking - Modular

Addition Spacer Units are added to achieve desired height

NA IH976  
Comprises

1 x Spacer Unit

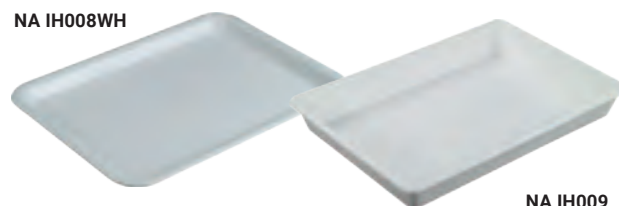
1 x Base Unit



Code	Type	Vol. litre	Ext. L x W x H mm	Int. L x W x H mm
NA IH976	Base + 1 Spacer	90	730 x 530 x 280	690 x 485 x 263
NA IH976/1	Base + 2 Spacers	136	730 x 530 x 408	690 x 485 x 391
NA IH976/2	Base + 3 Spacers	182	730 x 530 x 536	690 x 485 x 519
NA IH976/3	Base + 4 Spacers	228	730 x 530 x 664	690 x 485 x 647

## Tray - Commercial

NA IH008WH



NA IH009

Code	Type	Vol. litre	Ext. L x W x H mm	Int. L x W x H mm
NA IH008WH	Solid	-	455 x 343 x 32	420 x 305 x 25
NA IH009	Solid	-	445 x 315 x 58	422 x 292 x 55

## Tub - Oval - 54 Litre



Code	Type	Vol. litre	Ext. L x W x H mm	Int. L x W x H mm
NA IH091	Solid	54	700 x 600 x 340	635 x 535 x 320

## Bin - "Big Bin" - Remoulded - Food Grade



Code	Vol. litre	Ext. L x W x H mm	Description
TS RT350	350	1250 x 760 x 660	Dollies or Trolley Available to suit

## Bin - "Big Bin" - Tapered

MADE FROM EXTRA HEAVY DUTY  
INDUSTRIAL PLASTIC



RE M500BLU shown  
with optional dolly

- ✓ Low density polyethylene
- ✓ Non Toxic
- ✓ Easily cleaned
- ✓ Impact absorbing
- ✓ Resistant to most chemicals
- ✓ Suitable for operating temperatures between -10°C and +60°C



Bin Code	Type	Vol. litre	Top L x W mm*	Base L x W x H mm*
RE M500	Tapered	500	1100 x 720	960 x 580 x 740
RE TD L31GFL33	Optional light duty dolly to suit RE M500			
RE TD M31GFM64	Optional medium duty dolly to suit RE M500			
Add to bin code: NAT <input type="checkbox"/> BLA <input checked="" type="checkbox"/> BLU <input type="checkbox"/> eg. Natural bin = RE M500 <b>NAT</b>				



## Bin - "Big Bin" - Rectangular

Big bins for big jobs! Ideal for food, healthcare, textiles, pharmaceutical, laundries and most manufacturing industries.



Rectangular and square units require side support framework if being filled with liquid (supports ex-stock for main models) Outlets can be fused to tanks as required including any necessary valves, etc.

Bin Code	Type	Vol. litre	L x W x H mm **	Lid Code
RE M130	Rectangular	130	680 x 440 x 500	RE M130L
RE M170	Rectangular	170	680 x 440 x 650	RE M130L
RE M180	Rectangular	180	820 x 520 x 540	RE M180L
LI TA1216*	Rectangular	250	1030 x 510 x 495	LI TA1217
RE M300	Rectangular	300	1630 x 435 x 430	No lid
RE M322	Rectangular	320	915 x 610 x 610	RE M322L
RE M422	Rectangular	450	1220 x 610 x 610	RE M422L
RE M600	Rectangular	600	1200 x 700 x 750	No lid
Add to bin code: NAT <input type="checkbox"/> BLA <input type="checkbox"/> BLU <input type="checkbox"/> eg. Natural bin = RE M130NAT * Available in Natural only ** Measurement is excluding Lip				
RE TD L21GFL14	Optional dolly with 75mm castors to suit RE M130 & RE M170			
RE TD L21GFL33	Optional dolly with 100mm castors to suit RE M130 & RE M170			
RE TD L20GFL33	Optional dolly with 100mm castors to suit RE M180			
RE TD L22GFL33	Optional dolly with 100mm castors to suit RE M322			
RE TD L23GFL33	Optional dolly with 100mm castors to suit RE M422			
RE TD L33G L33	Optional dolly with 100mm castors to suit RE M600			

## Bin - "Big Bin" - Tray

Heavy duty rotomould tray in food grade polyethylene. Easily cleaned, high impact absorbing, resistant to most chemicals. Suitable for operating temperature of between -10 and +60 degrees Celsius.



RE M180T

Code	Type	Vol. litre	L x W x H mm*
RE M180T	Tray	25	813 x 517 x 103
BR BR3	Tray	80	980 x 520 x 180
LI MH1659	Tray	120	1160 x 540 x 200

Add to bin code: NAT ☐ BLA ☐ eg. Natural bin = RE M180TNAT

## Bin - "Big Bin" - Pallet Type

These food grade pallet bins can be moved with a forklift or pallet truck for easy handling and fast, accessible storage. Perfect for pet food, fruit and vegetables, nuts and general materials handling. Options include lids and rotatable bases.



RE M1000NAT



LI MH1630

Code	Colour	Vol. litre	Int. L x W x H mm	Lid Code
LI MH1630*	Blue	1000	1100 x 1100 x 1150	LI MH1631
LI MH1632	Blue	1000	1100 x 1100 x 1150	LI MH1631
RE M1000NAT*	Natural	1000	1100 x 1120 x 1115	With Lid
RE M1000BLA*	Black	1000	1100 x 1120 x 1115	With Lid

LI MH1630\*, REMH1000NAT\*, RE M1000BLA\*: Without Rotatable Base;  
LI MH1632: With Rotatable Base.

## Bin - "Big Bin" - Square

Big bins for big jobs! Heavy duty remoulded bins in food grade polyethylene. Ideal for food, healthcare, textiles, pharmaceutical, laundries and most manufacturing industries.

Easily cleaned, high impact absorbing, resistant to most chemicals.



DX R160 with optional Dolly

BR BR6

DX R340/915 with optional Dolly

Bin Code	Type	Vol. litre	Top L x W x H mm	Lid Code
BR BR6	Square	100	435 x 435 x 600	No Lid
DX R160	Square	160	690 x 690 x 490	DX R160LID
DX R340/915	Square	340	670 x 670 x 955	DX R340/915LID

Add to code: Add to bin code: NAT ☐ BLA ☐ eg. Natural bin = BR BR6NAT

## Bin - Vitub - 200 Litre

Designed with smooth lines, and in food grade material, the large capacity 200 litre Vitub is ideal for a multitude of applications.



Code	Type	Vol. litre	Ext. L x W x H mm	Int. L x W x H mm
NA IH539	Solid	200	990 x 660 x 470	910 x 580 x 460

Add to bin code: WH ☐ (food grade) BLK ☐ (non food grade)  
eg. White food grade bin = NA IH539WH

## Bin - Storage Tote with Lid - 53 Litre & 75 Litre

A must for storage and transport. Reinforced rib bottom allows product to be dragged. User friendly grip handles decrease the potential of hand injury. Lid snaps tight, keeping contents secure.



Code	Type	Vol. litre	L x W x H mm	Pallet
TR 3011	Solid	53	708 x 434 x 272	Fits 120cm Pallets
TR 3012	Solid	75	708 x 434 x 384	Fits 120cm Pallets

Add to code: BU= ☐ YE= ☐ GR= ☐ RE= ☐ CL= ☐ WHT= ☐ GY= ☐  
eg. White bin = TR 3011WH

## Bin - Round Bin

Durable, heavy-duty containers that are built tough to survive rough handling and rugged environments. All plastic construction will not rust, chip or peel; resists dents and double-ribbed base increases stability and dragging capacity. Reinforced rims add strength and durability whilst built-in handles allow easy, non-slip lifting and anti-jam nesting. Strong, snap-on lids are available for secure, stable stacking.



Four vent channels provide 50% less worker exertion.



Double-ribbed base increases stability and dragging capacity



Comes with four trash liner grooves for attachment

Code	Capacity L	Diameter mm
TR 1011	38	400 x 440
TR 1012	75	490 x 570
TR 1013	121	560 x 700
TR 1014	166	610 x 800

Add to code: BU= ☐ YE= ☐ GR= ☐ RE= ☐ WHT= ☐ GY= ☐  
eg. Blue bin = TR 1013BU

## Bin - Round - Industrial Quality

Nally storage bins are used extensively throughout the meat, small-goods and food processing industries and in the manufacture, storage and movement of pharmaceuticals, chemicals, textiles and leathers.



NA IP015  
Red / White

NA IP018  
Green / White



NA IP025 - shown with optional lid  
Optional Dolly  
NA TD L03ZFL35

Bin Code	Vol. litre	Height mm	Top Dia. mm	Lid Code
NA IP015	67	508	540	NA IP016
NA IP018	84	610	540	NA IP016
NA IP025	113	455	637	NA IP026
RE TD L02ZFL35	Optional dolly with 50mm castor to suit NA IP015			
RE TD L03ZFL35	Optional dolly with 50mm castor to suit NA IP018			
RE TD M02Z L14	Optional dolly with 75mm castor to suit NA IP015			
RE TD M03Z L14	Optional dolly with 75mm castor to suit NA IP018			
RE TD M04Z L14	Optional dolly with 75mm castor to suit NA IP025			

Add to code: WH = ☐ GR= ☐ RE = ☐ eg. Red Bin = NA IP015RE

## Bin Lid - Round



Code	Suits Bin	Capacity L	Diameter W x H mm
TR 1611	TR 1011	38	406 x 52
TR 1612	TR 1012	75	507 x 66
TR 1613	TR 1013	121	570 x 59
TR 1614	TR 1014	166	622 x 60

Add to code: BU= ☐ YE= ☐ GR= ☐ RE= ☐ WHT= ☐ GY= ☐ eg. Grey Lid = TR 1613GY

## Bin Dolly - Round



Foot fixing position, easy loading and unloading.

TR 1811BK

Code	Suits Bin	Prod Size mm
TR 1811BK	THOR 75 litre - 121 litre - 166 litre - 208 litre Round Bins	464 x 168

Bin - Slimline Rectangular Bin

Our products are made of high quality material and have sturdy structure to prolong life. The slim rectangle shape is space efficient and fits tight spaces. Vent channels are designed for easy lifting of a filled trash liner and less worker exertion. Comes with four trash liner grooves for easy attachment without the need to tie knots. Bottom hand-holds assist in emptying. Multiple interchangeable tops are available to fit for various applications. Custom imprinting available.



Code	Capacity L	Diameter mm	Colours
TR 1211	60	507 x 272 x 632	Blue/Beige/ Grey/Black
TR 1213	87	570 x 272 x 756	Blue/Beige/ Grey/Black
TR 1643L	Handle Lid		Grey
TR 1641	Bottle/Can Recycling Lid		Green
TR 1814	Svelte Dollies	516 x 290 x 260	Black
Add to code: BU = <span style="color:blue">■</span> BK= <span style="color:black">■</span> GY= <span style="color:grey">■</span> BG= <span style="color:blue">■</span> GN= <span style="color:green">■</span> eg. Blue bin = TR 1013BU			

Bin - Square Storage Container

Comes with an ergonomic handle with a smooth and comfortable feeling. Reinforced rims add strength and durability. 4 mm thick walls add strength and durability. 30 mm width bottom hand grips assist in emptying. Tight fitting lids help protect the contents. Square dollies are available to ensure easy mobility and manoeuvrability of heavy loads.



Bin Code	Vol. litre	Width mm	Length mm	Height mm
TR 1233GY	150	597	597	730
TR 1663GY	Lid to suit above			

Bin Rack



Code	Description	Dimensions mm	Load kg	Colour
TR 4492BK	THOR Utility/Dunnage Rack	122 x 40 x 30.5	900	Black

Pallet - Export - Flat Top

Made from high density polyethylene this is the ideal export pallet. Designed to interlock, ensuring secure storage and transport and very safe with no nails, splinters or broken boards that can cause costly damage. Very environmentally responsible and economical, easy to clean and no need for costly fumigation.  
High pressure injection moulded Export Pallet featuring flat top and underside with ribbing pattern and picture frame style bottom runners. Designed for four-way fork access to pallet by forklift truck and pallet jacks and compatible with loading into most common sea shipping containers. This Export Pallet is able to be commercially washed and is 100% Recyclable at the end of service life.

Plastic Pallet Features:

- ✓ Component Weight kg: 16.5
- ✓ Static Storage kg UDL: 4500
- ✓ Dynamic (forklift operation) kg UDL: 1000
- ✓ Supply Chain Transportation kg UDL: 1000.



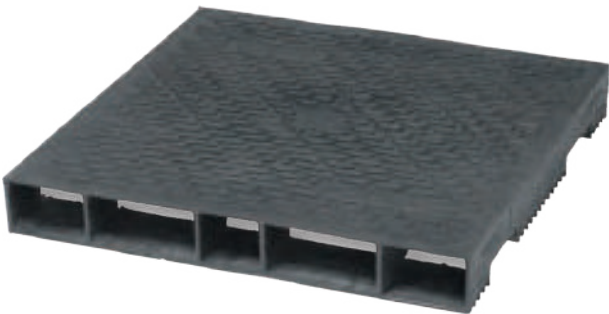
Code	L x W x H mm	SWL kg	Static Load kg	Weight kg
NA NS920	1100 x 1100 x 150	1000	4500	15

Pallet - Enviropal

The Enviropal Plastic Pallet is Australian made from Post Consumer Plastic Waste making it both environmentally friendly and economical. This Plastic Pallet is sized to fit the Australian footprint and is ideal for both drive-in and beam racking.  
The Enviropal Plastic Pallet has been specially designed with the food and pharmaceutical industries in mind and can be chemically sterilised, steam cleaned, or hot washed without any effect to the corrosion proof body.  
The Enviropal Plastic Pallet is 100% recyclable.

Plastic Pallet Specifications:

- ✓ Corrosion proof construction.
- ✓ Four way forklift entry points.
- ✓ Two way pallet jack entry.
- ✓ Unique slip-resistant surface.
- ✓ Weighs only 34kg.



Code	L x W x H mm	Beam Racking	Drive In Racking	Static Load	Weight
NA 126756	1165 x 1165 x 150	2000kg	1000kg	8000kg	34kg



## Pallet - Polyethylene - Vipallet

The ideal pallet for food processing, pharmaceuticals, groceries, printing, textiles, chemicals, beverages, tanning and general industrial applications. Maximum load for selective racking and forklift transport is 1000kg.

### Plastic Pallet Features:

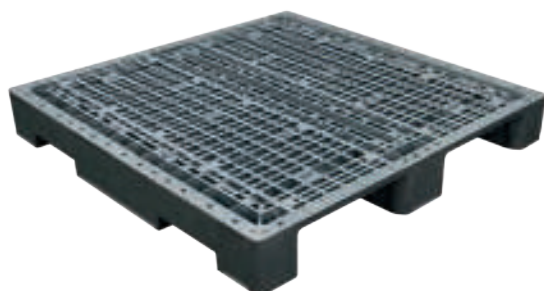
- ✓ Four way forklift entry
- ✓ Two way pallet truck entry.
- ✓ Weighs only 17kg.
- ✓ Pallet is injection moulded.
- ✓ Pallet is food grade.



Code	L x W x H mm	Dynamic Load kg	Static Load kg	Weight kg
NA H537	1168 x 1168 x 160	1000	4000	17

## Pallet - Polyethylene - Eco Pallet

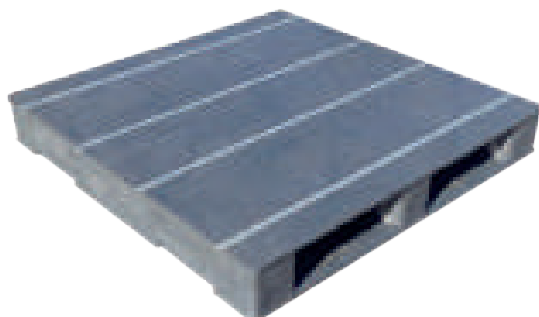
Australian standard sized rackable plastic pallet with 4 way forklift entry access enabling efficient handling in limited spaces. Made from 100% recycled material.



Code	L x W mm	Beam Rack Capacity kg	Static Capacity kg	Weight kg
TS ECO1160L	1165 x 1165	2000	10000	17.6

## Pallet - Polyethylene - Heavy Duty

Heavy Duty, Smooth Flat Deck Surface with Anti Slip. Available in 100% Recycled or Virgin Material.



Code	L x W mm	Beam Rack Capacity kg	Static Capacity kg	Weight kg
TS ECO1165MS	1165 x 1165	2000	10000	24.3

## Bin - Megabin

The MegaBin is Australia's most versatile bin. Designed for the transport and storage of all rural produce including fruits and vegetables, grapes and olives.

Rounded corners and smoother interior surfaces results in less bruising and damage to your produce. Multiple vents in sides and base provide superior airflow so products cool faster adding valuable shelf life to your produce.

The design is compatible with most bin handling equipment and Megabins are up to 40% lighter in weight than timber bins and the weight is constant as they don't absorb moisture. This allows for freight efficiencies of 4-5%. In practice you are able to transport 2-3 extra bins of fruit per semi-trailer load.

A lid, tipping bars, hotstamping and numbering are all optionally available.

### Features

- ✓ Rounded corners and smooth, non porous surface
- ✓ Multiple vents in sides and base
- ✓ Unique design with a larger forklift entry than timber bins
- ✓ Moulded label holders for cards & tags
- ✓ Built-in, comfortable hand holds for easy lifting & handling
- ✓ Positive interlocking foot design permitting fast & safe stacking
- ✓ 500 kg Capacity

NA MS7810



NA MS7800

NA 126389



Code	Type	Vol. litre	Int. L x W mm	Ext. L x W x H mm	Weight kg
NA MS7800	Solid	755	1082 x 1082	1165 x 1165 x 780	44
NA MS7810	Vented	755	1082 x 1082	1165 x 1165 x 780	44
NA 126389	Optional Lid to suit Megabin				

## Bin - Megabin - Collapsible

Environmental protection material PP and PE ensure the purity, safety and degradation of raw material. Small storage can save a lot of space. Pulling black handle down is the key to fold the box.



Code	Loading Weight	L x W x H (Open) mm	L x W x H (Close) mm	Weight kg
TS HMT116KW4	4T	1160 x 1160 x 800	1160 x 1160 x 300	46

## Bin - Round Heavy Duty

Designed to be nested when empty, these space saving robust containers come in a variety of sizes with lids. They are ideal for both liquid and powder storage with easy access for dispensing.



Bin Code	Vol. litre	Height mm	Top Dia. mm	Lid Code
VI MH1640	40	460	430	VI MH1641
VI MH1643	58	450	490	VI MH1644
VI MH1647	115	710	540	VI MH1649

Add to code: NAT = natural BLK = black eg. White bin = VI MH1640NAT

## Bin - Round Heavy Duty - 200 litre

Heavy duty rotomould round bin in food grade polyethylene that is easily cleaned, high impact absorbing and resistant to most chemicals. Ideal for food, healthcare, textiles, pharmaceutical, laundries and most manufacturing industries.



RE M200NAT with Optional Lid



RE M200BLA

Code	Colour	Vol. litre	Height mm	Rim Dia. mm
RE M200BLA	Black	200	875	640
RE M200NAT	Natural	200	875	640
NA IP026	Lid to suit above available in White only			
Dolly to suit	RE TD L41GFL14 (75mm Castor)	RE TD L41GFL33 (100mm Castor)		

## Bucket - Industrial With Handle

Nally buckets are available in capacities from 13.6 litres to 22.7 litres. Their heavy duty, boil proof properties make them particularly popular in food processing establishments, dairies and hospitals.

NA N151  
Red / WhiteNA N258WH  
White OnlyNA N075  
Red / White / Blue / Black

NA N073 Lid

Bucket Code	Vol. litre	Height mm	Top Dia. mm	Lid Code
NA N151	13.6	295	300	NA N148
NA N258WH	18.2	295	360	NA N073
NA N075	22.7	360	360	NA N073

Add to code: BLU = Blue WH = White BLK = Black RE = Red eg. Red bucket = NA N075RE

## Drum - Open Head - Screw Lid

Food grade polyethylene, open head drums with large screw lid and rubber seal available in 30, 60, 120 and 200 litre.



Code	Vol. litre	Height mm	Dia. mm	Neck mm	Colour
AT 2207BLK	30	460	325	255	Black
AT 2207NAT	30	460	325	255	Natural
AT 2177BLK	60	620	402	255	Black
AT 2177NAT	60	620	402	255	Natural
NY E984	120	675	570		Blue
NY E459	200	1020	570		Blue
AT 5005	Tap to suit				

## Drum - Open Head - Clamp Ring Lid

Open Head Drum with push-on rubber sealed lid and clamp ring. Food grade polyethylene. Ideal for storage and transportation of foods, liquids or granules.



BR 200030BL



RH 0623012

Code	Vol. litre	Height mm	Dia. mm	Colour
RH 0623012	120	825	500	Black
BR 200030BL	200	900	600	Blue

## Drum - Closed Head - 200 Litre

Closed Head Drum with filling and vent bung. Food grade polyethylene, available in blue only. Available in 'Dangerous' and 'Non Dangerous' goods versions.



RE TD L41GFL33



Bin Code	Vol. litre	Height mm	Dia. mm	Colour	Goods Type
RH 0622021	200	925	580	Blue	Dangerous
RH 0623220A	200	925	580	Blue	Non - Dangerous

Dolly	Code	Castor	Code	Castor
Dolly to suit	RE TD L41GFL14	(75mm Castor)	RE TD L41GFL33	(100mm Castor)

## Drum - Rectangular

Food grade polyethylene drum with screw cap and handle.

Cube drums are made to conveniently stack on top of each other for easy storage. Outlet with bung for optional tap.

Contact Reflex Equip today for expert advice on the right Rectangular Plastic Drum for your particular application.



Code	Vol. litre	Height mm	Top / Base Dia. mm	Colour
RH 15NAT	15	300	280 / 280	Natural
RH 15DGBLA*	15	300	280 / 280	Black
RH 25NAT	25	440	280 / 280	Natural
RH 25DGBLA*	25	440	280 / 280	Black
AT 5005	Tap to suit		*Dangerous Goods version	

## Jerry Can - Water - 20 Litre

Food grade polyethylene jerry can suitable for water or other similar use. Available in white only with carry handle, screw cap, nozzle and threaded outlet with bung (for optional tap).

Not suitable for fuels or chemicals



Code	Vol. litre	Height mm	L x W mm	Colour
BM 00176-4	20	520	340 x 160	Natural
AT 5005	Tap to suit			Black

## Drum - Closed Head

Designed to offer clear smooth internal walls with 150mm sealable screw lid, these containers offer strength, easy access and calibrated level indicators.



Bin Code	Vol. litre	Height mm	Diameter mm
VI MH1605	125	675	495
VI MH1606	235	865	600
VI MH1607	265	1040	590

Add to code: NAT = natural BLU = blue eg. Natural bin = VI MH1606NAT

## Drum Pourer - Safepour

Safepour is the safe and cost effective way to decant liquids in your work place.

The Safepour has been developed to hold 15-25 litre rectangle/round/ plastic/metal drums and removes the need to struggle with heavy and awkward drums of liquids. This minimises the risk of back and other injuries caused by spillage and saves the costs associated with fluid loss.



Code	Capacity litre	Weight kg
PH SAF225	15 - 25	8

## Jerrycan - Fuel Safe™

FUEL SAFE™ jerrycans transport fuel and other flammable materials safely and securely and are specially designed with self-venting nozzles to prevent glugging and accidental spillage.

Constructed from a carefully formulated high density polyethylene plastic, FUEL SAFE™ jerrycans represent the ideal solution for fleet operators, industrial applications, tradesmen and contractors. They are also suitable for consumers who require efficient, safe storage and transportation of flammable liquids such as petrol, diesel, methylated spirits and mineral turpentine.



Code	Vol. litre	Width mm	Depth mm	Height mm
HA VISJC5	5	250	130	240
HA VISJC10	10	320	150	320
HA VISJC20	20	350	150	510